



RUTLAND COUNTY
GARDEN FURNITURE

Hand-Crafted

ASSEMBLY INSTRUCTIONS

OAKHAM PICNIC TABLE AND BENCH SET

Before you commence the assembly process we recommend that you read these instructions thoroughly beforehand to familiarise yourself with the assembly process and to also check that you have the correct components. If for any reason you need assistance, you can find our contact details on the final page of these instructions.

We highly recommend that any assembly is carried out on a flat, level surface if possible and that you use another person to assist you if necessary.

PACKAGE CONTENTS

1 x Table top
2 x Seats
2 x Table A frames
4 x Bench A frames
6 x Cross braces
32 x M8 Coach screws
Cover caps

TOOLS REQUIRED

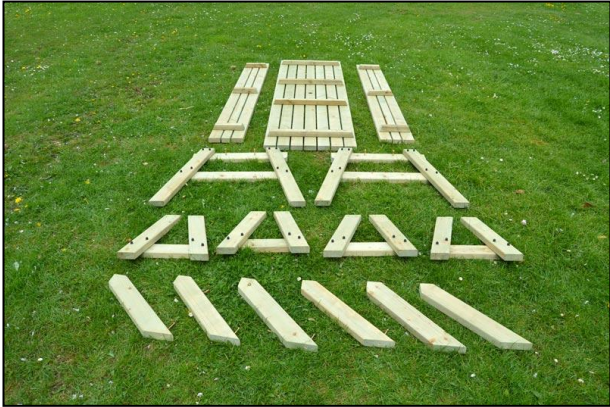
10mm socket or spanner



THE OAKHAM PICNIC TABLE AND BENCH SET

OAKHAM PICNIC TABLE AND BENCH SET

Step 1



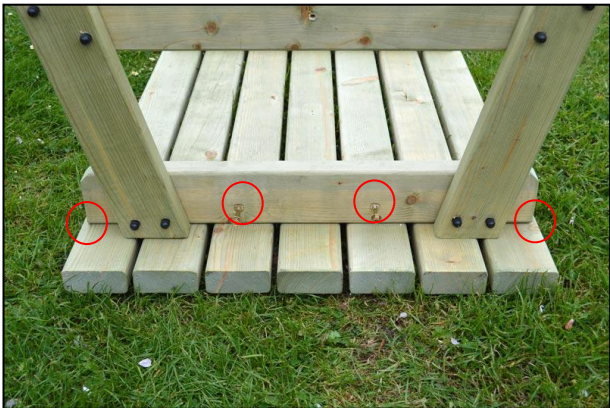
Ensure that you have all of the correct parts as listed on the front page of these instructions, including any fixings.

Step 2



Lay the table top upside down on a clean, flat surface taking care not to damage it. Now line up one of the table A-frames centrally on the table top as shown in step 3.

Step 3



Place one of the table A-frames centrally against the fixing batten ensuring that the gap at the table edge is the same on both sides. Now, using 2 of the supplied coach screws and the pre drilled holes, secure the table A-frame to the fixing batten on the table top.

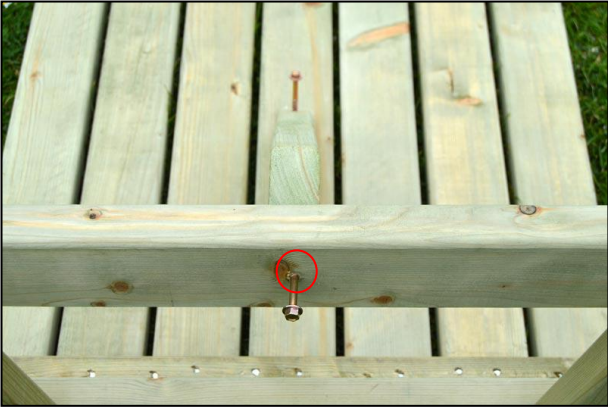
Step 4



Place a cross brace in position as shown, ensuring that it is flush with the underside of the table A-frame and proceed to step 5.

OAKHAM PICNIC TABLE AND BENCH SET

Step 5



Ensure that the brace is lined up centrally on the table and attach it to the A-frame with a coach screw.

Step 6



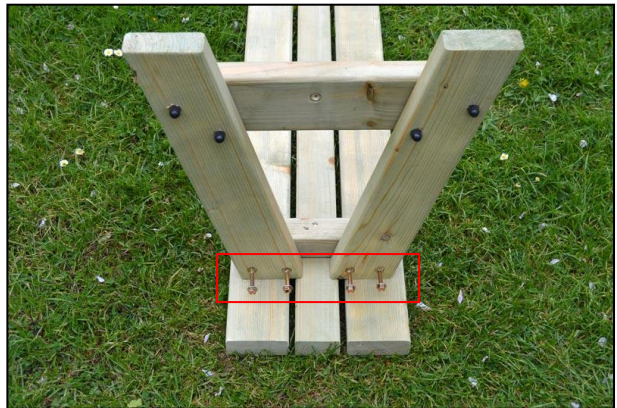
Make sure that the brace is still aligned centrally on the table and affix the other end to the table top with a coach screw as shown. Repeat steps 3 -6 to finish the table assembly and proceed to step 7.

Step 7



Lay one of the bench seats face down on the flat surface as you did with the table top.

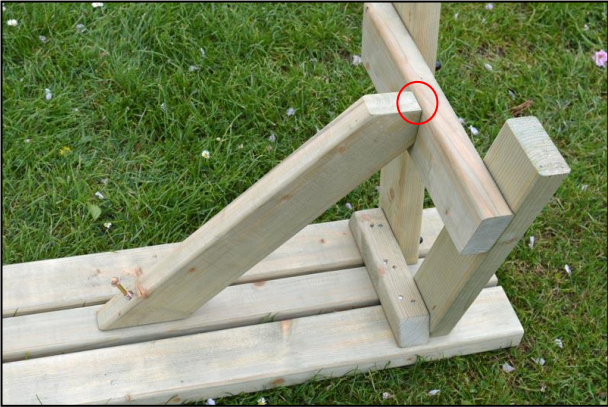
Step 8



Place one of the bench A-frames centrally against the fixing batten ensuring that the gap at the bench edge is the same on both sides. Now, using 4 of the supplied coach screws and the pre drilled holes, secure the bench A-frame to the fixing batten on the seat.

OAKHAM PICNIC TABLE AND BENCH SET

Step 9



Place a cross brace in position as you did for the table, again ensuring that it is flush with the underside of the bench A-frame and proceed to step 10

Step 10



Ensure that the brace is lined up centrally on the bench and attach it to the A-frame with a coach screw.

Step 11



Make sure that the brace is still aligned centrally on the bench and affix the other end to the bench with a coach screw as you did for the table in step 6. Repeat steps 7 -11 to complete the assembly of the 2 benches.

Step 12



Finally, turn all of completed pieces right way up and cover any exposed coach screw heads with the cover caps provided. Your Oakham picnic table and bench set is now complete.

WE HOPE THAT YOU FOUND YOUR PRODUCT QUICK AND EASY TO ASSEMBLE BUT IF NOT AND YOU REQUIRE ANY FURTHER ASSISTANCE OR HAVE ANY QUESTIONS YOU CAN CONTACT US BY TELEPHONE ON: **01778 440803**
EMAIL: INFO@RUTLANDCOUNTYGARDENFURNITURE.CO.UK
WWW.RUTLANDCOUNTYGARDENFURNITURE.CO.UK

Rutland County Garden Furniture Ltd, Ashbourne House, 2 Dovecote Meadows,
Aslackby, Sleaford, Lincs, NG34 0HZ.
Company No: 7670072 VAT No: 151744027